

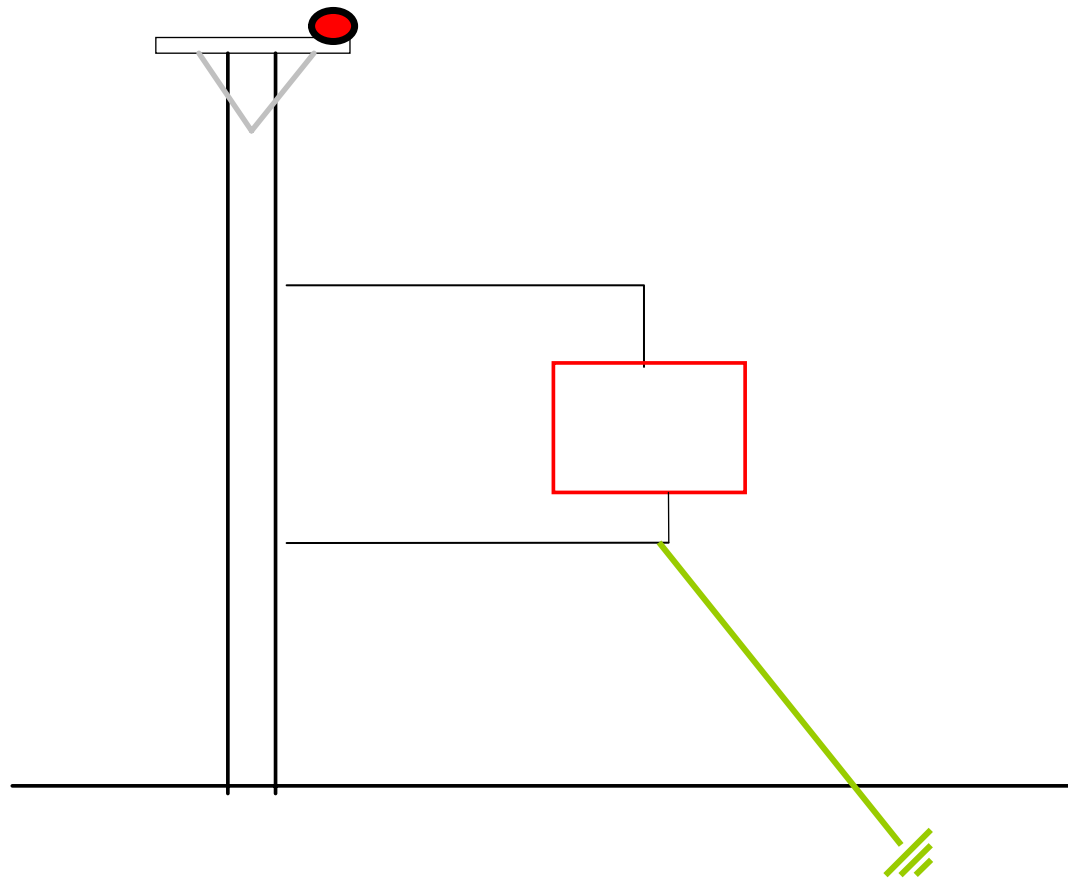
Current in Power line wood poles: A measuring method

Mats Wahlberg
Sarah Rönnberg
Skellefteå Kraft Elnät AB /
LTU Skellefteå Elkraft

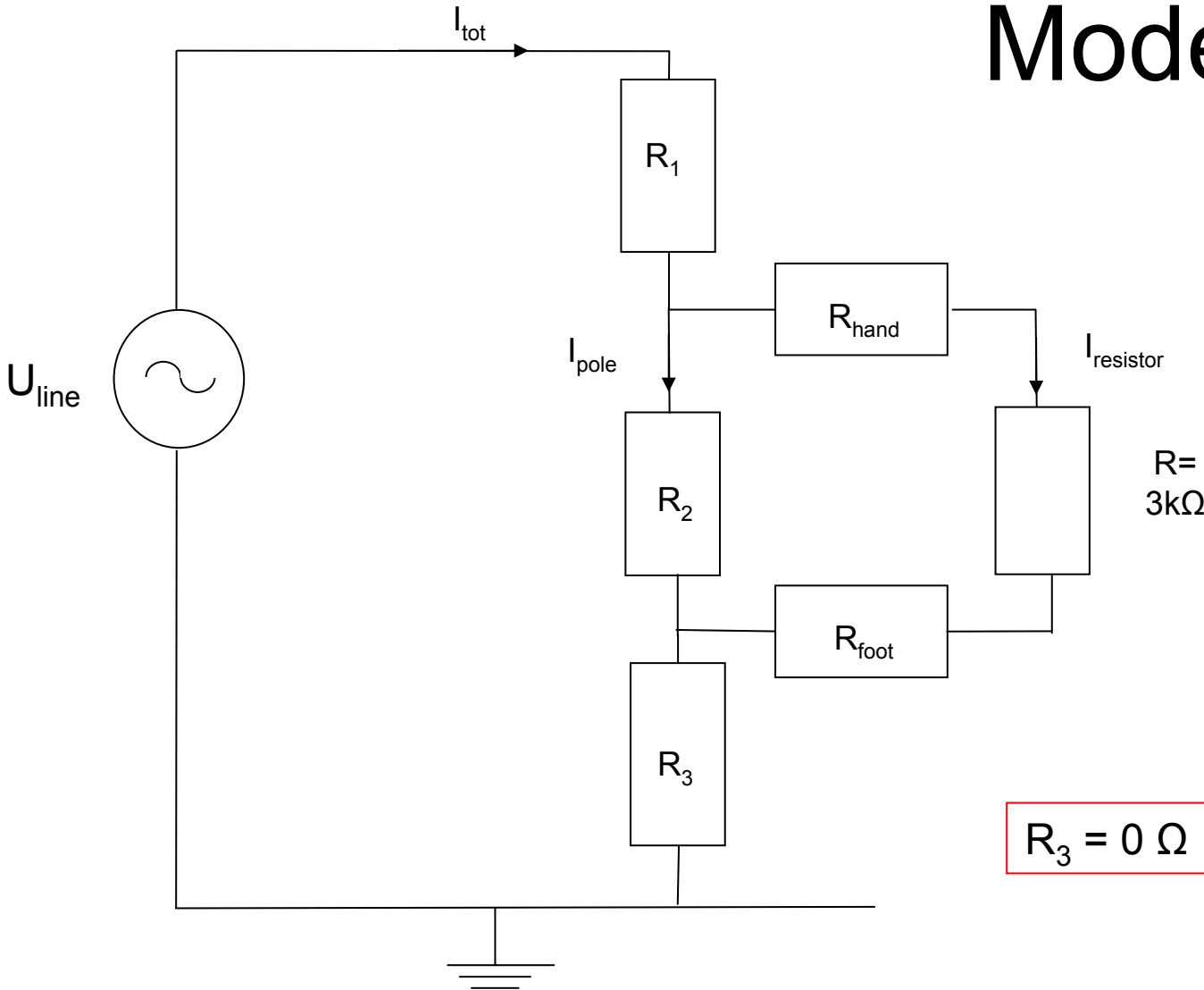
Fault must exist: conductor has fall off or broken insulator



Accident in 2008 aug

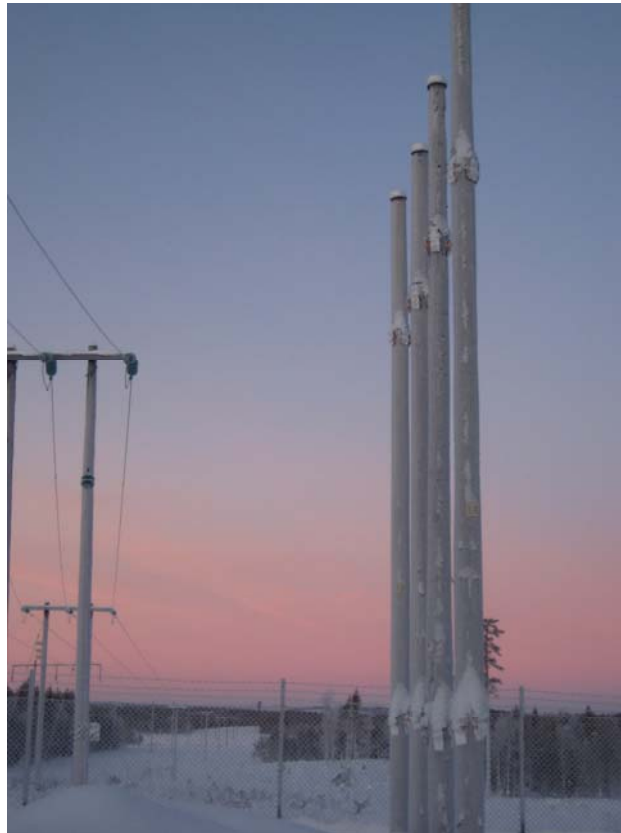


Model

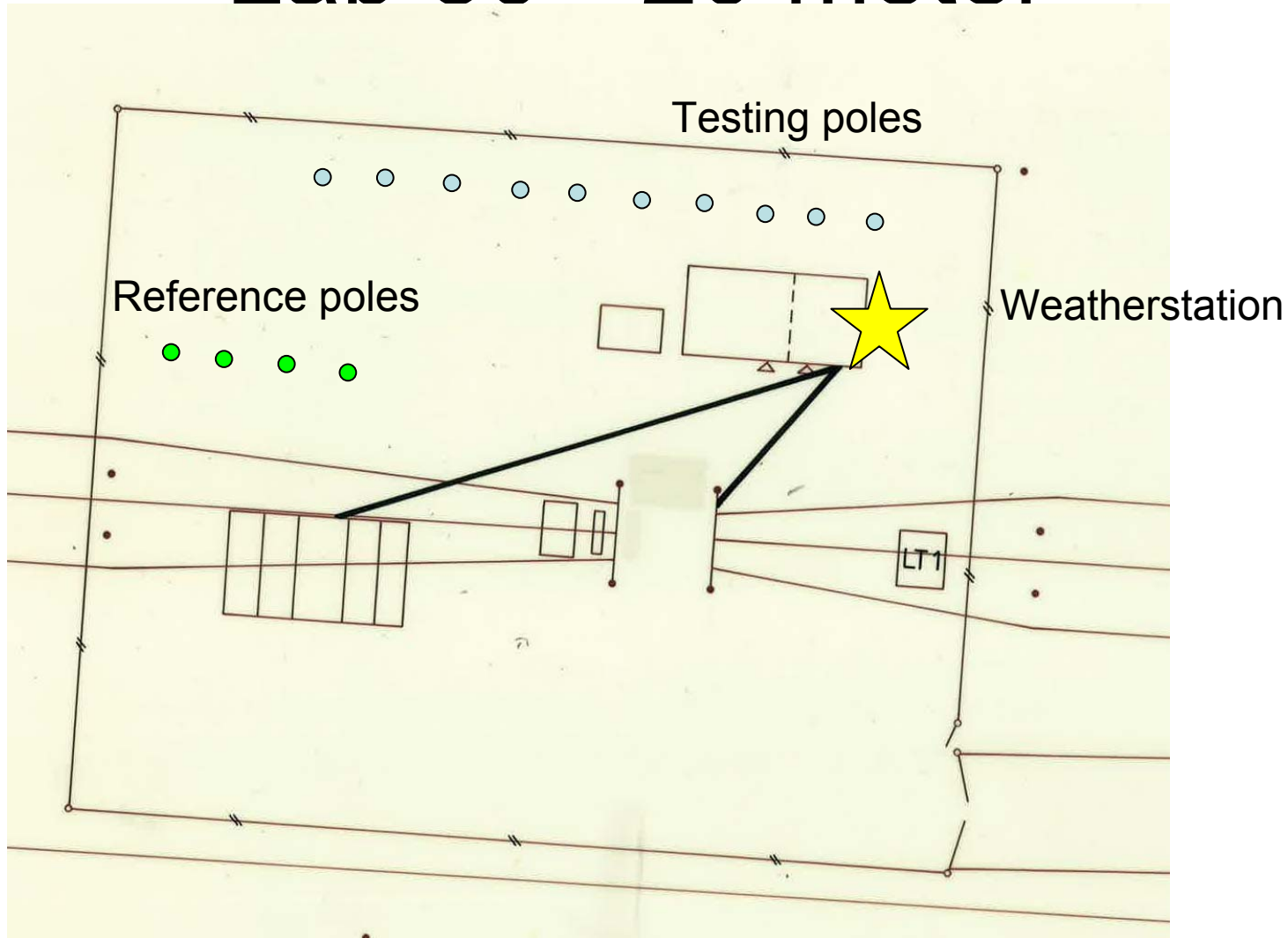


Lab

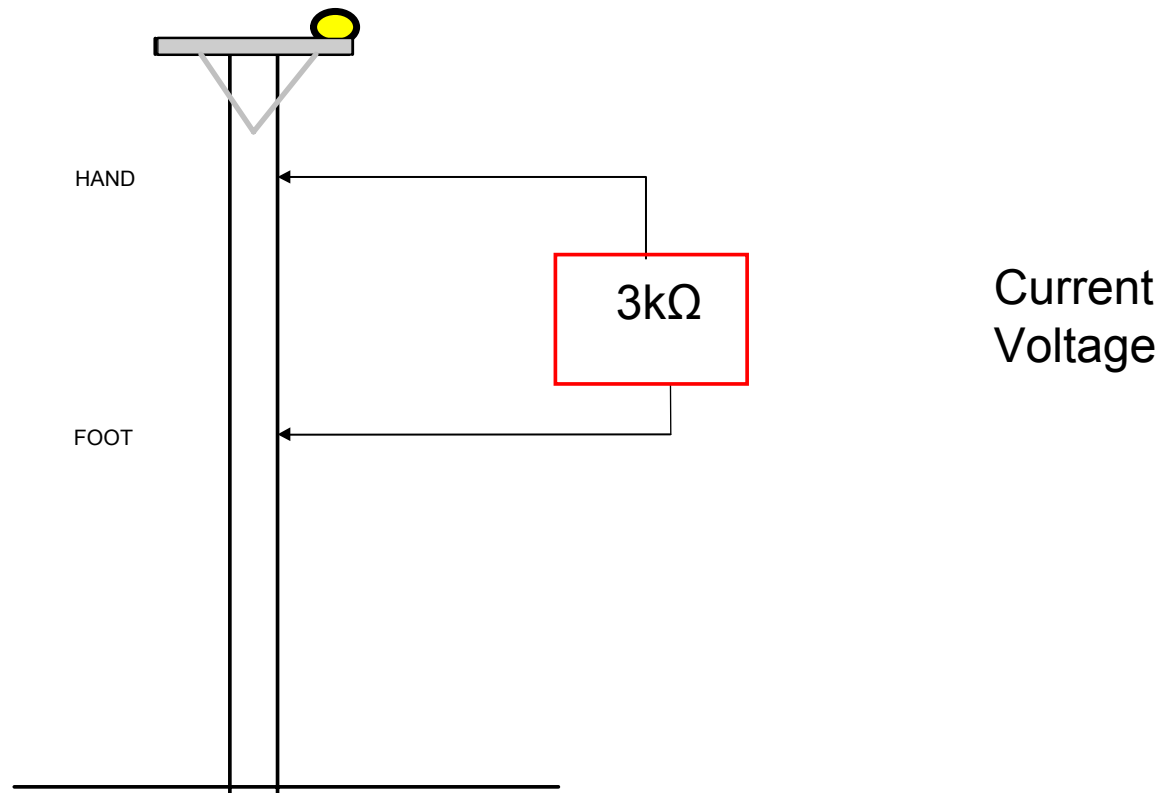
Mensträsk Skellefteå Västerbotten



Lab 30 * 20 meter

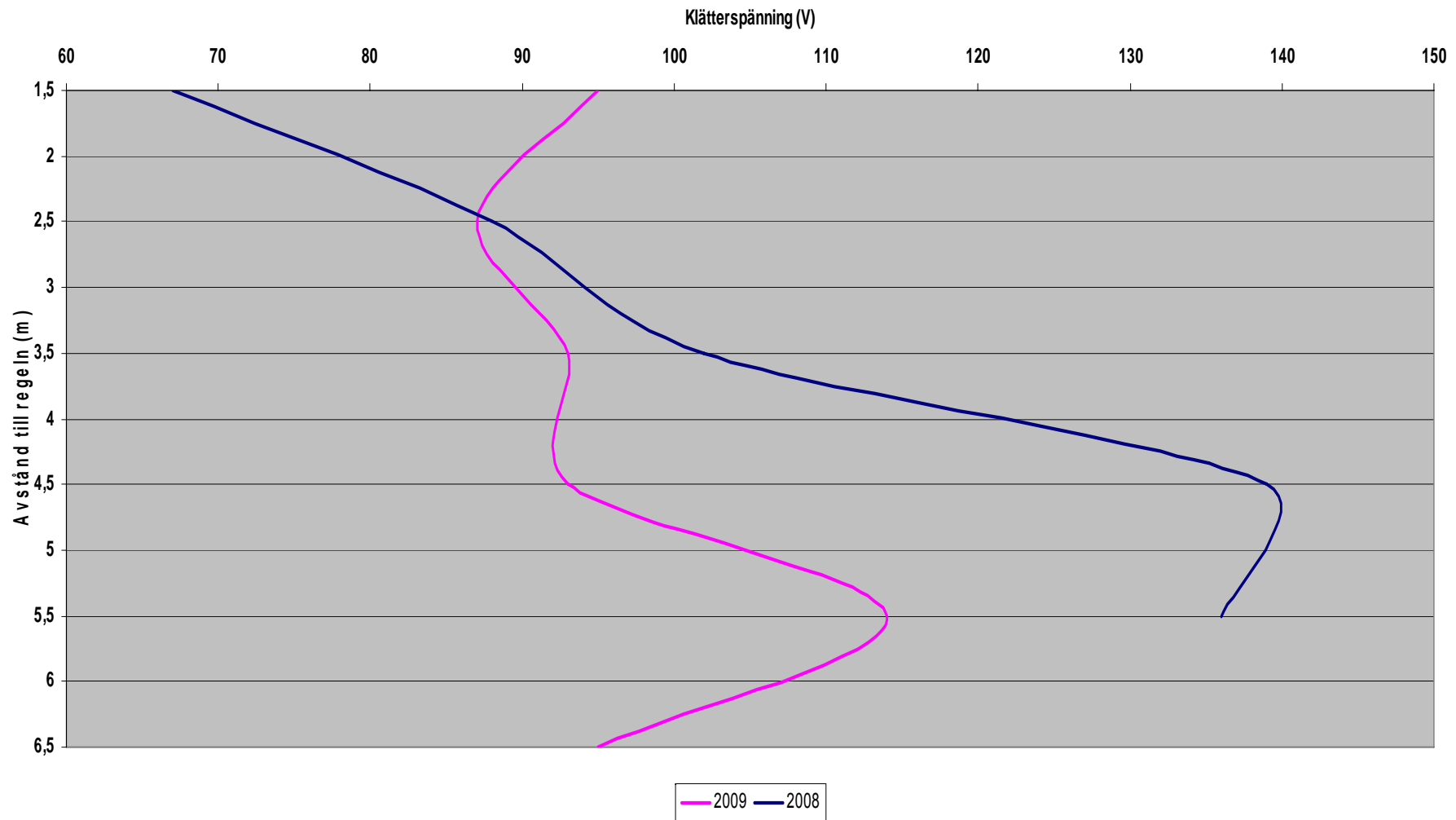


Method: Climbing voltage



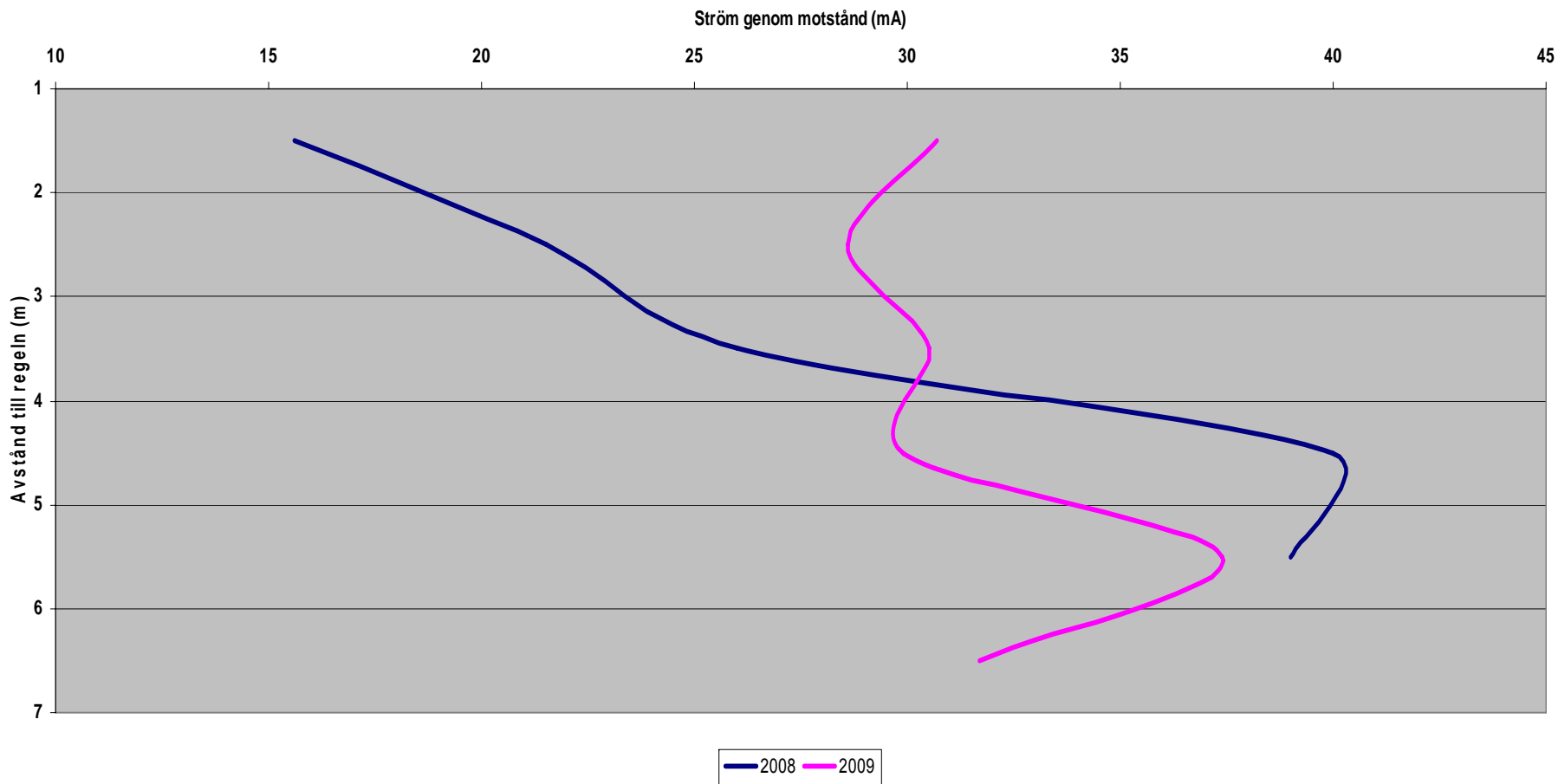
Connection





Y-axis distance from metall crossarm

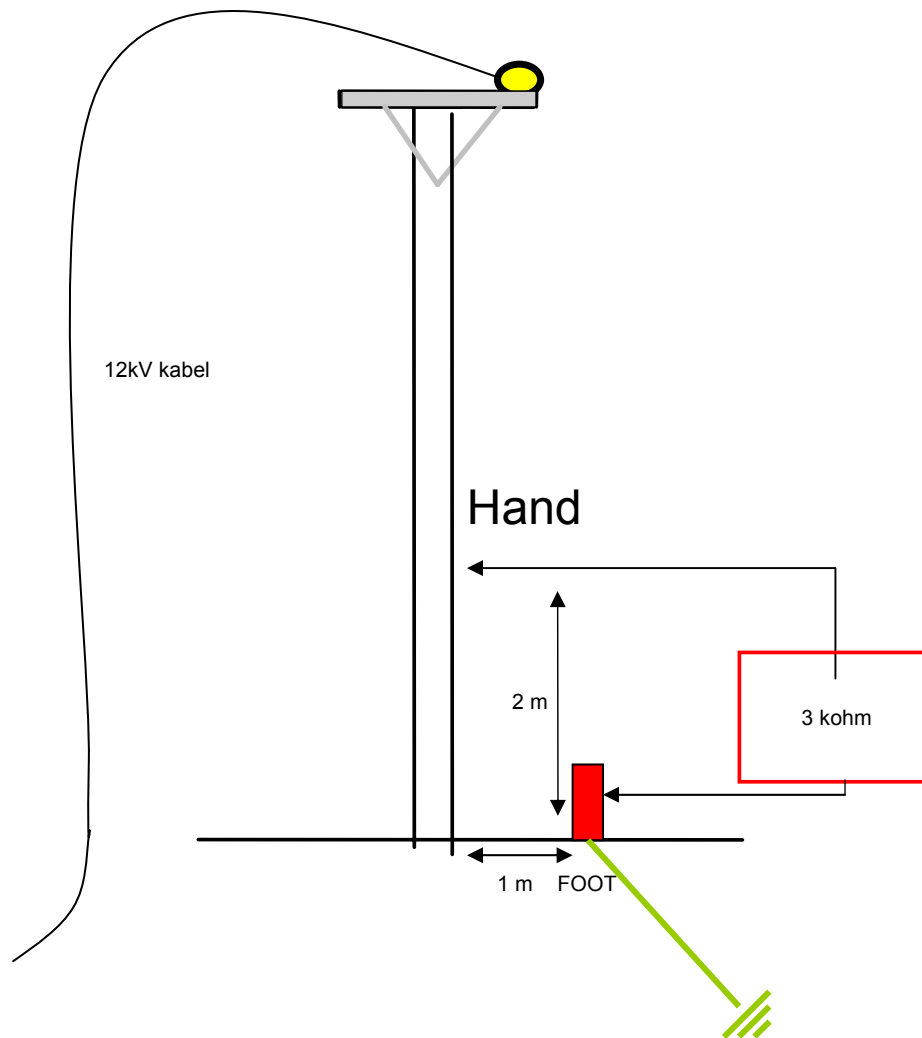
X-axis climbing voltage



Y-axis distance from metal crossarm

X-axis current through resistor

Method: Touch voltage



Connection



Lack of knowledge

- Existing values in wood poles
 - Resistance
- Different behaviour depending on weather and kind of treatment
 - Impregnation
 - Much more
- Weather dependence
 - Wind
 - Rain
 - Sun
 - Temperature

Contact e-mail

wood.current@ltu.se